

VINSON MOORE LEAGUE, A-15

(BEARINGS ARE BASED ON THE TEXAS COORDINATE SYSTEM, NORTH CENTRAL ZONE, NAD83 MAP DATUM)

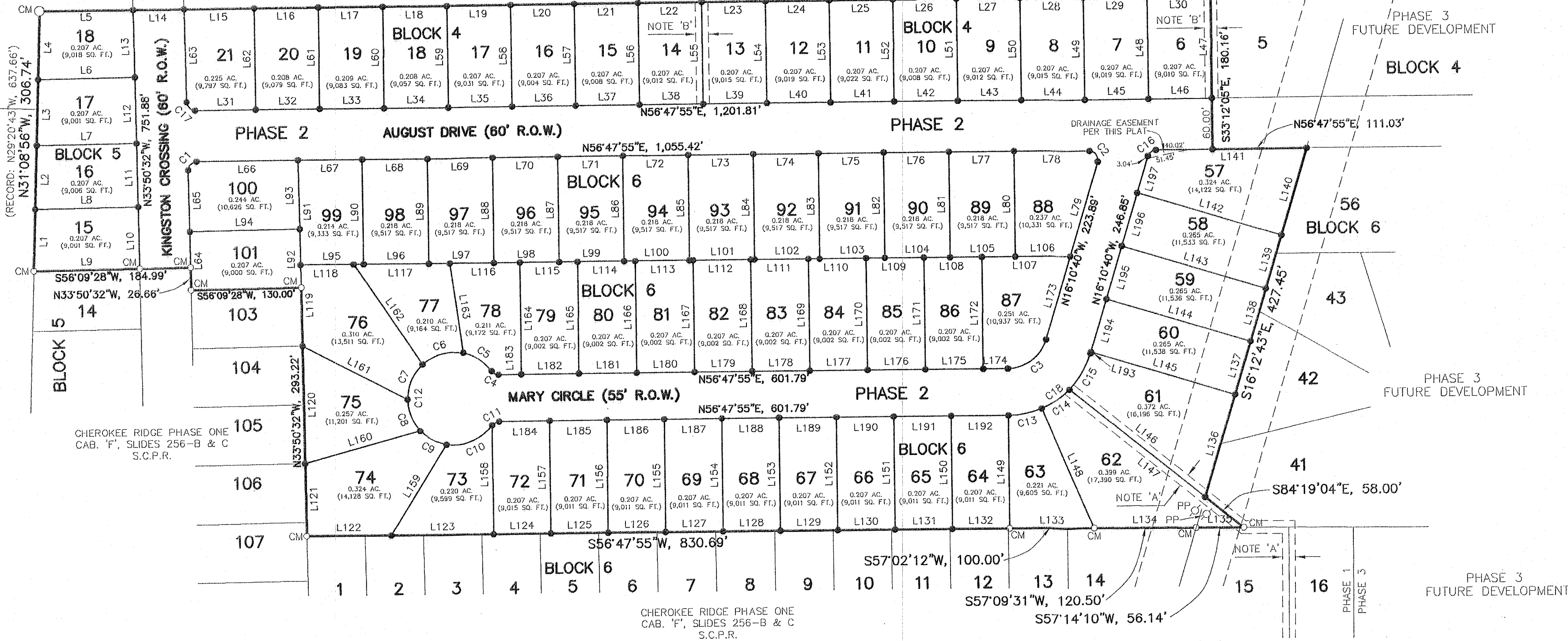
DDW, INC.
100.00 AC.
C.F.N. 20150100033315
O.P.R.S.C.

(RECORD: N58°26'03"E, 4,052.05')
N56°45'43"E, 1,383.62'

100' WIDE T.P.&L. CO. EASEMENT

DDW, INC.
100.00 AC.
C.F.N. 20150100033315
O.P.R.S.C.

AMERICAN TOWERS, LLC.
5.790 AC.
C.F.N. 20180100051992
O.P.R.S.C.



| LINE | BEARING | DISTANCE | LINE | BEARING | DISTANCE | LINE | BEARING | DISTANCE | LINE | BEARING | DISTANCE |
|------|-------------|----------|------|-------------|----------|------|-------------|----------|------|-------------|----------|
| L1 | N31°08'56"W | 73.10' | L51 | N33°12'05"W | 119.97' | L101 | N56°47'55"E | 77.00' | L151 | N33°12'05"W | 133.00' |
| L2 | N31°08'56"W | 75.26' | L52 | N33°12'05"W | 119.92' | L102 | N56°47'55"E | 77.00' | L152 | N33°12'05"W | 133.00' |
| L3 | N31°08'56"W | 77.55' | L53 | N33°12'05"W | 119.88' | L103 | N56°47'55"E | 77.00' | L153 | N33°12'05"W | 133.00' |
| L4 | N31°08'56"W | 80.83' | L54 | N33°12'05"W | 119.83' | L104 | N56°47'55"E | 77.00' | L154 | N33°12'05"W | 133.00' |
| L5 | N56°45'43"E | 110.59' | L55 | N33°12'05"W | 119.78' | L105 | N56°47'55"E | 77.00' | L155 | N33°12'05"W | 133.00' |
| L6 | N56°09'35"E | 114.38' | L56 | N33°12'05"W | 119.73' | L106 | N56°47'55"E | 85.00' | L156 | N33°12'05"W | 133.00' |
| L7 | N56°09'28"E | 118.02' | L57 | N33°12'05"W | 119.68' | L107 | N56°47'55"E | 104.82' | L157 | N33°12'05"W | 133.00' |
| L8 | N56°09'28"E | 121.56' | L58 | N33°12'05"W | 119.64' | L108 | N56°47'55"E | 88.20' | L158 | N33°12'05"W | 128.77' |
| L9 | N56°09'28"E | 124.99' | L59 | N33°12'05"W | 119.59' | L109 | N56°47'55"E | 88.20' | L159 | N01°16'29"W | 125.29' |
| L10 | N33°50'32"W | 73.02' | L60 | N33°12'05"W | 119.54' | L110 | N56°47'55"E | 88.20' | L160 | N41°24'55"E | 141.54' |
| L11 | N33°50'32"W | 75.18' | L61 | N33°12'05"W | 119.49' | L111 | N56°47'55"E | 88.20' | L161 | S84°07'13"W | 138.80' |
| L12 | N33°50'34"W | 77.46' | L62 | N33°12'05"W | 119.44' | L112 | N56°47'55"E | 88.20' | L162 | N67°11'05"W | 142.81' |
| L13 | N33°50'34"W | 79.58' | L63 | N33°12'05"W | 119.39' | L113 | N56°47'55"E | 88.20' | L163 | N41°09'58"W | 106.81' |
| L14 | N56°45'43"E | 60.00' | L64 | N33°50'32"W | 69.23' | L114 | N56°47'55"E | 88.20' | L164 | N33°12'05"W | 132.00' |
| L15 | N56°45'43"E | 82.89' | L65 | N33°50'32"W | 72.52' | L115 | N56°47'55"E | 88.20' | L165 | N33°12'05"W | 132.00' |
| L16 | N56°45'43"E | 76.00' | L66 | N56°47'55"E | 119.90' | L116 | N56°47'55"E | 83.00' | L166 | N33°12'05"W | 132.00' |
| L17 | N56°45'43"E | 76.00' | L67 | N56°47'55"E | 76.20' | L117 | N56°47'55"E | 113.40' | L167 | N33°12'05"W | 132.00' |
| L18 | N56°45'43"E | 75.75' | L68 | N56°47'55"E | 77.00' | L118 | N56°47'55"E | 63.04' | L168 | N33°12'05"W | 132.00' |
| L19 | N56°45'43"E | 75.50' | L69 | N56°47'55"E | 77.00' | L119 | N33°50'32"W | 96.00' | L169 | N33°12'05"W | 132.00' |
| L20 | N56°45'43"E | 75.25' | L70 | N56°47'55"E | 77.00' | L120 | N33°50'32"W | 138.46' | L170 | N33°12'05"W | 132.00' |
| L21 | N56°45'43"E | 75.25' | L71 | N56°47'55"E | 77.00' | L121 | N33°50'32"W | 85.52' | L171 | N33°12'05"W | 132.00' |
| L22 | N56°45'43"E | 75.25' | L72 | N56°47'55"E | 77.00' | L122 | N56°47'55"E | 100.00' | L172 | N33°12'05"W | 132.00' |
| L23 | N56°45'43"E | 75.25' | L73 | N56°47'55"E | 77.00' | L123 | N56°47'55"E | 120.94' | L173 | N16°10'40"W | 109.92' |
| L24 | N56°45'43"E | 75.25' | L74 | N56°47'55"E | 77.00' | L124 | N56°47'55"E | 67.75' | L174 | N56°47'55"E | 88.20' |
| L25 | N56°45'43"E | 75.25' | L75 | N56°47'55"E | 77.00' | L125 | N56°47'55"E | 67.75' | L175 | N56°47'55"E | 88.20' |
| L26 | N56°45'43"E | 75.10' | L76 | N56°47'55"E | 77.00' | L126 | N56°47'55"E | 67.75' | L176 | N56°47'55"E | 88.20' |
| L27 | N56°45'43"E | 75.10' | L77 | N56°47'55"E | 77.00' | L127 | N56°47'55"E | 67.75' | L177 | N56°47'55"E | 88.20' |
| L28 | N56°45'43"E | 75.10' | L78 | N56°47'55"E | 89.32' | L128 | N56°47'55"E | 67.75' | L178 | N56°47'55"E | 88.20' |
| L29 | N56°45'43"E | 75.10' | L79 | N16°10'40"W | 115.74' | L129 | N56°47'55"E | 67.75' | L179 | N56°47'55"E | 88.20' |
| L30 | N56°45'43"E | 75.00' | L80 | N33°12'05"W | 123.60' | L130 | N56°47'55"E | 67.75' | L180 | N56°47'55"E | 88.20' |
| L31 | N56°47'55"E | 71.66' | L81 | N33°12'05"W | 123.60' | L131 | N56°47'55"E | 67.75' | L181 | N56°47'55"E | 88.20' |
| L32 | N56°47'55"E | 76.00' | L82 | N33°12'05"W | 123.60' | L132 | N56°47'55"E | 67.75' | L182 | N56°47'55"E | 88.20' |
| L33 | N56°47'55"E | 76.00' | L83 | N33°12'05"W | 123.60' | L133 | N57°02'12"E | 100.00' | L183 | N56°47'55"E | 26.92' |
| L34 | N56°47'55"E | 75.75' | L84 | N33°12'05"W | 123.60' | L134 | N57°09'31"E | 120.50' | L184 | N56°47'55"E | 59.79' |
| L35 | N56°47'55"E | 75.50' | L85 | N33°12'05"W | 123.60' | L135 | N57°14'10"E | 56.14' | L185 | N56°47'55"E | 67.75' |
| L36 | N56°47'55"E | 75.25' | L86 | N33°12'05"W | 123.60' | L136 | N16°12'43"W | 125.63' | L186 | N56°47'55"E | 67.75' |
| L37 | N56°47'55"E | 75.25' | L87 | N33°12'05"W | 123.60' | L137 | N16°12'43"W | 65.00' | L187 | N56°47'55"E | 67.75' |
| L38 | N56°47'55"E | 75.25' | L88 | N33°12'05"W | 123.60' | L138 | N16°12'43"W | 65.00' | L188 | N56°47'55"E | 67.75' |
| L39 | N56°47'55"E | 75.25' | L89 | N33°12'05"W | 123.60' | L139 | N16°12'50"W | 65.00' | L189 | N56°47'55"E | 67.75' |
| L40 | N56°47'55"E | 75.25' | L90 | N33°12'05"W | 123.60' | L140 | N16°12'39"W | 106.82' | L190 | N56°47'55"E | 67.75' |
| L41 | N56°47'55"E | 75.25' | L91 | N33°50'32"W | 123.61' | L141 | N56°47'55"E | 178.08' | L191 | N56°47'55"E | 67.75' |
| L42 | N56°47'55"E | 75.10' | L92 | N33°50'32"W | 69.23' | L142 | S73°49'20"W | 177.41' | L192 | N56°47'55"E | 67.75' |
| L43 | N56°47'55"E | 75.10' | L93 | N33°50'32"W | 81.18' | L143 | S73°49'20"W | 177.45' | L193 | N16°10'40"W | 150.00' |
| L44 | N56°47'55"E | 75.10' | L94 | N56°09'28"E | 130.00' | L144 | S73°49'20"W | 177.49' | L194 | N16°10'40"W | 65.00' |
| L45 | N56°47'55"E | 75.10' | L95 | N56°47'55"E | 74.82' | L145 | S73°49'20"W | 177.53' | L195 | N16°10'40"W | 65.00' |
| L46 | N56°47'55"E | 75.00' | L96 | N56°47'55"E | 77.00' | L146 | N84°19'04"W | 204.26' | L196 | N16°10'40"W | 65.00' |
| L47 | N33°12'05"W | 120.16' | L97 | N56°47'55"E | 77.00' | L147 | N84°19'04"W | 262.26' | L197 | N16°10'40"W | 45.12' |
| L48 | N33°12'05"W | 120.12' | L98 | N56°47'55"E | 77.00' | L148 | N56°29'02"W | 153.74' | | | |
| L49 | N33°12'05"W | 120.07' | L99 | N56°47'55"E | 77.00' | L149 | N33°12'07"W | 133.00' | | | |
| L50 | N33°12'05"W | 120.02' | L100 | N56°47'55"E | 77.00' | L150 | N33°12'05"W | 133.00' | | | |

| CURVE | RADIUS | DELTA ANGLE | CHORD BEARING | CHORD LENGTH | ARC LENGTH |
|-------|---------|-------------|---------------|--------------|------------|
| C1 | 10.00' | 90°38'27" | S11°28'41"W | 14.22' | 15.82' |
| C2 | 10.00' | 107°01'25" | N69°41'23"W | 16.08' | 18.68' |
| C3 | 47.50' | 72°58'36" | N20°18'37"E | 56.49' | 60.50' |
| C4 | 10.00' | 54°46'05" | N84°10'53"E | 9.20' | 9.56' |
| C5 | 55.00' | 42°21'50" | N89°37'04"W | 39.75' | 40.67' |
| C6 | 55.00' | 54°04'17" | S42°09'52"W | 50.00' | 51.90' |
| C7 | 55.00' | 48°34'33" | S09°09'33"E | 45.25' | 46.63' |
| C8 | 55.00' | 42°38'50" | S54°46'15"E | 40.00' | 40.94' |
| C9 | 55.00' | 37°06'22" | N85°21'09"E | 35.00' | 35.62' |
| C10 | 55.00' | 64°46'00" | N34°24'58"E | 58.91' | 62.17' |
| C11 | 10.00' | 54°45'44" | S29°24'50"W | 9.20' | 9.56' |
| C12 | 55.00' | 289°31'52" | S33°12'05"E | 63.46' | 277.93' |
| C13 | 102.50' | 22°30'15" | N45°32'47"E | 40.00' | 40.26' |
| C14 | 102.50' | 22°30'13" | N23°02'33"E | 40.00' | 40.26' |
| C15 | 102.50' | 27°58'05" | N02°11'36"W | 49.54' | 50.03' |
| C16 | 10.00' | 72°59'23" | S20°19'21"W | 11.89' | 12.74' |
| C17 | 10.00' | 89°21'33" | S78°31'19"E | 14.06' | 15.60' |
| C18 | 102.50' | 72°58'34" | N20°18'38"E | 121.90' | 130.55' |

NOTICE: SELLING A PORTION OF THIS ADDITION BY METES AND BOUNDS IS A VIOLATION OF CITY ORDINANCE AND STATE LAW AND IS SUBJECT TO FINES AND WITHHOLDING OF UTILITIES AND BUILDING PERMITS.

Filed for Record
in the Official Records Of:
Smith County
On: 12/16/2021 2:51:06 PM
In the PLAT Records

Doc Number: 202101051517
Number of Pages: 2
Amount: 101.00
By: Delgado, Alma

Karen Shipps
Smith County Clerk

FINAL PLAT
CHEROKEE RIDGE PHASE TWO
VINSON MOORE LEAGUE, A-15
CITY OF BULLARD
SMITH COUNTY, TEXAS

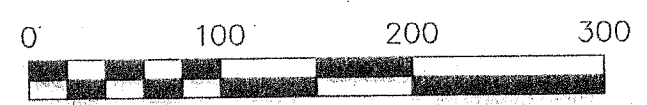
BMS TYLER SURVEYORS
BOB MATUSH SURVEYING, INC.
REGISTERED PROFESSIONAL LAND SURVEYORS
2624 KENSINGTON DRIVE, SUITE 107 TYLER, TEXAS 75703
TEL. (903) 561-7287 www.bmst Tyler.com
T.B.P.E.L.S. FIRM NO. 10048200

JOB NO. 20-020 DATE: 1 DECEMBER 2021 SCALE: 1"=100'

INDICATES FND. 1/2" I. ROD
UNLESS OTHERWISE NOTED.

INDICATES SET 1/2" I. ROD
MARKED WITH A PLASTIC CAP.
BMS TYLER.

LEGEND
CM=CONTROLLING MONUMENT
PP=POWER POLE



PAGE 1 OF 2

PLAT RECORDED IN CABINET 'F', SLIDE 294C
DATE RECORDED: 12.16.2021

F/294C